



SPECIFICATIONS

Length 18' 6"	Beam 94"	Max Horsepower 115 HP	Dry Weight (Without engines) 1,700 LBS	Livewell Capacity 38 GAL	Fuel Capacity 27 GAL
Length on Trailer (Motor down, tongue swung in) 21' 6"	Width on Trailer 102"	Port Rod Box Length 8'	Starboard Rod Box Length 8'	Front Deck Length 6' 2"	Front Deck Width (Widest) 6' 5"

The CX 18 S offers the CX pedigree in a boat with unmatched maneuverability and is also extremely affordable. It's built with many of the same options and features as the larger models, and the high-quality craftsmanship you expect in an Earl Bentz built boat.

The CX 18 S is the perfect boat for the weekend angler or the family that enjoys spending time on the water wetting a line. If you're looking for a bass boat that has a lot of the features of a tournament rigged boat with a smaller footprint, the CX 18 S is the boat for you.

The CX 18 S comes with a 115 HP engine, fiberglass finished compartments, Surf-Turf cockpit flooring, digital gauge (engine data), molded-in trolling motor wedge, livewell hi-speed pickup (optional), easy access hatches to all of your pumps in the bilge area, massive center storage compartment on the front deck, and much more.

Whether you're a newcomer to bass fishing looking for the perfect first boat, or an avid tournament competitor - we've got you covered. Check out the CX 18 S at your closest dealer today!



*Pictured boats may have optional equipment

INNOVATION BECOMES DOMINATION



CONSTRUCTION

- Limited lifetime hull warranty
- 3-year limited component warranty
- 100% composite construction—no wood
- Tri-core composite transom
- High performance resin and barrier coat
- Hull hand laid fiberglass construction
- Zero-flex fully foamed stringer system
- Premium gelcoat with UV inhibitors
- Plumbing and electrical systems factory tested

FISHING FEATURES

- High-capacity rear insulated livewell with divider
- 800 gph livewell aerator pump
- 800 gph livewell recirculation pump
- 800 gph livewell pump-out pump
- Livewell timer
- Livewell overflow system
- One (1) bike seat and pro-pole
- One (1) fold-down fishing seat
- Two (2) front deck seat locations
- Two (2) retractable rod buckles—one (1) bow, one (1) rod ramp
- Front deck tool and plier organizer with cupholder
- 6-gauge trolling motor harness
- 10 gauge clean power harness for electronics
- Bow trim switch for easy operation
- Deck recess for trolling motor foot pedal
- Fully finished fiberglass boxes throughout with custom mats
- Stainless steel bilge and livewell discharge plate
- Passenger side rod ramp
- Locking oversized storage boxes
- Center bow storage box with tackle organizing system



SAFETY AND QUALITY

- Electric bilge pump with automatic float switch
- Finished bilge compartment with access doors to pumps and batteries
- Built-in LED bow navigation lights
- Removable LED stern light
- Circuit breaker protected tinned wiring with custom switches
- Horn
- Non-skid aft step mat
- Non-skid bow step mat
- Plexiglass tinted removable windshield—two (2) on dual console
- Recessed retractable boarding ladder
- Stainless steel boarding grab handle
- Retractable passenger grab-handle
- Stainless steel passenger grab handle
- LED cockpit courtesy light
- Mechanical steering with non-tilt steering wheel
- Six-inch (6") fixed setback plate
- Stainless steel bow and stern pull-up cleats



COMFORT AND CONVENIENCE

- Custom suspension driver and passenger bucket seats
- Surf Turf cockpit flooring
- Stainless steel prop
- Cranking battery
- Custom steering wheel
- Dual Pro 2 x 6 battery charger
- Center console storage with fiberglass lid
- Driver's console with extended leg room
- Custom 5" digital gauge with data display
- Lid pistons on storage and rod boxes
- Stainless steel bow and transom eyes
- Fully insulated built-in ice chest with custom Surf Turf mat
- Four (4) stainless steel drink holders in cockpit
- Plush 24 oz carpet with edge trim
- Trolling motor battery trays
- Chrome fuel fill

TRAILER FEATURES

- Single axle channel frame trailer
- Custom 14" aluminum wheels and balanced radial tires with matching spare tire
- Vault Hubs with 10 year limited warranty
- Swing tongue
- Winch and jack
- Four pin trailer plug
- Aluminum diamond-plate tread for front and rear step pads
- Caymas lighted step pads
- LED waterproof tail, marker, and reverse lights
- Rock Guard polyurea finish
- Custom pin stripe to match boat



SPECIFICATIONS

Length 18' 6"	Beam 94"	Max Horsepower 175 HP	Dry Weight (Without engines) 1,800 LBS	Livewell Capacity 38 GAL	Fuel Capacity 42 GAL
Length on Trailer (Motor down, tongue swung in) 21' 6"	Width on Trailer 102"	Port Rod Box Length 8'	Starboard Rod Box Length 8'	Front Deck Length 6' 2"	Front Deck Width (Widest) 6' 5"

If you love the CX 18 S but want a little more power and upgraded features, the CX 18 SS model comes fully packed with a high-performance level to suit your style! The CX 18 SS will provide you with solid top-end speed, an extremely stable platform while fishing, and butter soft ride in subpar conditions, while keeping you bone dry.

We know how important it is for fishermen to bring all the tools they need to the water with them, which is why we took advantage of every inch of this boat with the storage and overall layout, including a massive center storage compartment on the front deck.

In addition, the CX 18 SS includes extended legroom at the driver's console, Surf-Turf cockpit flooring, molded-in trolling motor wedge, livewell hi-speed pickup (optional), built-in shock absorbing suspension system with custom upholstery colors to match your boat, and much more. As a big upgrade from its standard model, the CX 18 SS comes with a 150 HP engine, with the ability to upgrade to a 175 HP engine.

When you choose Caymas, you're getting innovation, high-quality manufacturing, and the latest in design technology. Check out the CX 18 SS at your closest dealer today!



*Pictured boats may have optional equipment

INNOVATION BECOMES DOMINATION



CONSTRUCTION

- Limited lifetime hull warranty
- 3-year limited component warranty
- 100% composite construction—no wood
- Tri-core composite transom
- High performance resin and barrier coat
- Hull hand laid fiberglass construction
- Zero-flex fully foamed stringer system
- Premium gelcoat with UV inhibitors
- Plumbing and electrical systems factory tested



SAFETY AND QUALITY

- Electric bilge pump with automatic float switch
- Finished bilge compartment with access doors to pumps and batteries
- Built-in LED bow navigation lights
- Removable LED stern light
- Circuit breaker protected tinned wiring with custom switches
- Horn
- Non-skid aft step mat
- Non-skid bow step mat
- Plexiglass tinted removable windshield—two (2) on dual console
- Recessed retractable boarding ladder
- Stainless steel boarding grab handle
- Retractable passenger grab-handle
- Stainless steel passenger grab handle
- LED cockpit courtesy light
- SeaStar non-tilt hydraulic steering and steering wheel
- Six-inch (6") fixed setback plate
- Stainless steel bow and stern pull-up cleats

TRAILER FEATURES

- Single axle channel frame trailer with disc brakes
- Custom 14" aluminum wheels and balanced radial tires with matching spare tire
- Vault Hubs with 10 year limited warranty
- Swing tongue
- Winch and jack
- Seven pin trailer plug
- Aluminum diamond-plate tread for front and rear step pads
- Caymas lighted step pads
- LED waterproof tail, marker, and reverse lights
- Rock Guard polyurea finish
- Custom pin stripe to match boat

FISHING FEATURES

- High-capacity rear insulated livewell with divider
- 800 gph livewell aerator pump
- 800 gph livewell recirculation pump
- 800 gph livewell pump-out pump
- Livewell timer
- Livewell overflow system
- One (1) bike seat and pro-pole
- One (1) fold-down fishing seat
- Two (2) front deck seat locations
- Two (2) retractable rod buckles—one (1) bow, one (1) rod ramp
- Front deck tool and plier organizer with cupholder
- 6-gauge trolling motor harness
- 10 gauge clean power harness for electronics
- Bow trim switch for easy operation
- Deck recess for trolling motor foot pedal
- Fully finished fiberglass boxes throughout with custom mats
- Stainless steel bilge and livewell discharge plate
- Passenger side rod ramp
- Locking oversized storage boxes
- Center bow storage box with tackle organizing system



COMFORT AND CONVENIENCE

- Custom suspension driver and passenger bucket seats
- Surf Turf cockpit flooring
- Stainless steel prop
- Cranking battery
- Custom steering wheel
- Dual Pro 2 x 6 battery charger
- Center console storage with fiberglass lid
- Driver's console with extended leg room
- Custom 5" digital gauge with data display
- Lid pistons on storage and rod boxes
- Stainless steel bow and transom eyes
- Fully insulated built-in ice chest with custom Surf Turf mat
- Four (4) stainless steel drink holders in cockpit
- Plush 24 oz carpet with edge trim
- Trolling motor battery trays
- Chrome fuel fill



CX 20 PRO

INNOVATION BECOMES DOMINATION

PRO MODEL FEATURES:

- Lowrance Ghost 47" trolling motor
- Lowrance® HDS 9 LIVE at bow
- Lowrance® HDS 9 LIVE at console
- Lowrance® 2-IN-1 Active Imaging
- Lowrance Point-1 antenna
- NEMA harness
- Ethernet cable
- Oxygen Innovations livewell system
- Keel protection
- Custom boat cover
- Dual disc brake upgrade on trailer



SPECIFICATIONS

Length 20' 4"	Beam 96"	Max Horsepower 250 HP	Dry Weight (Without engines) 2,000 LBS	Livewell Capacity 44 GAL	Fuel Capacity 50 GAL	Length on Trailer (Motor down, tongue swung in) 23' 9"
Width on Trailer 102"	Port Rod Box Length 8'	Center Rod Box Length 8'	Starboard Rod Box Length 8'	Front Deck Length 6' 9"	Front Deck Width (Widest) 6' 7"	

With the challenges and demands of today's tournament angler, Earl Bentz has raised the bar even further from his long history of boating industry firsts with the innovations put into the CX 20 Pro.

The manufacturing team for the CX 20 Pro is the most talented group of boat-builders Earl has ever assembled. The CX 20 Pro takes the already tournament-ready bass boat to the next level by incorporating equipment that is desired by the most serious tournament anglers.

We are talking about pro upgrades such as Oxygen Innovations in the livewell systems, a Lowrance Ghost trolling motor, two 9" Lowrance HDS Live Units, and more to accompany the existing features of the tournament bass boat, including a revolutionary hull design with a 17" running pad and industry-first Hi-Speed pickup (optional).

Caymas is setting a new standard for excellence in manufacturing quality. Check out the CX 20 Pro at your closest dealer today!



*Pictured boats may have optional equipment

CONSTRUCTION

- Limited lifetime hull warranty
- Three (3) year limited component warranty
- 100% composite construction—no wood
- Tri-core composite transom
- High performance resin and barrier coat
- Hull hand laid fiberglass construction
- Zero-flex fully foamed stringer system
- Premium gelcoat with UV inhibitors
- Plumbing and electrical systems factory tested



SAFETY AND QUALITY

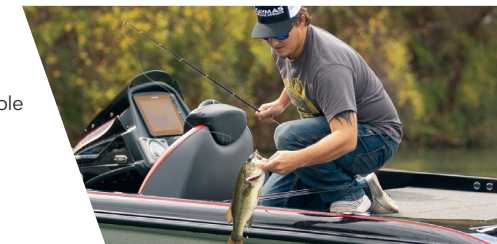
- Automatic bilge pump
- Electric bilge pump
- Finished bilge compartment with access doors to pumps and batteries
- Built-in LED bow navigation lights
- Removable LED stern light
- Custom digital switching with tinned wiring
- Horn
- Non-skid aft step mat
- Non-skid bow step mat
- Plexiglass tinted removable windshield—two (2) on dual console
- Recessed retractable boarding ladder
- Stainless steel boarding grab handle
- Retractable passenger grab handle
- Stainless steel passenger grab handle
- Hot Foot throttle
- LED cockpit courtesy light
- SeaStar hydraulic steering
- Tilt steering wheel
- Custom polished aluminum jackplate
- Waterproof stainless steel compartment latches
- Stainless steel bow and stern pull-up cleats

TRAILER FEATURES

- Tandem axle with disc brakes on both axles
- Channel frame with custom fitted bunks
- Custom 14" aluminum wheels and balanced radial tires with matching spare tire
- Vault Hubs with 10 year limited warranty
- Swing tongue
- Dutton-Lainson Winch and jack
- Ratchet trailer tie downs
- Seven pin trailer plug
- Easy-step oversized bow step pad
- Aluminum diamond-plate tread for front and rear step pads
- Caymas lighted step pads
- LED waterproof tail, marker, and reverse lights
- Rock Guard polyurea with clearcoat protective finish
- Custom pin stripe to match boat

FISHING FEATURES

- Two (2) independent high capacity rear insulated livewells
- Two (2) 800 gph livewell aerator pumps
- Two (2) 800 gph livewell recirculation pumps
- Two (2) 800 gph livewell pump-out pumps
- Livewell timer
- Livewell overflow system
- One (1) bike seat and pro-pole
- One (1) fold-down fishing seat
- Two (2) front deck seat locations
- Three (3) retractable rod buckles—two (2) at bow, one (1) at rod ramp
- Front deck tool and pliers organizer with cup holder
- 6-gauge trolling motor harness
- 10-gauge clean power harness for electronics
- Oversized bow trim switch buttons for easy foot operation
- Deck recess for trolling motor foot pedal
- Built-in fish measuring board with tool holder
- Fully finished fiberglass boxes throughout with custom mats
- LED compartment lights
- LED livewell lights
- Stainless steel bilge and livewell discharge plate
- Passenger side rod ramp
- Passenger footrest with integrated tackle/storage drawer
- Locking oversized storage boxes
- Folding fish net with custom holder
- Center bow rod box with tackle organizing system



COMFORT AND CONVENIENCE

- Custom color selection for entire boat and upholstery
- Custom suspension driver and passenger bucket seats with adjustable slides
- Surf Turf cockpit flooring
- Stainless steel prop
- AGM cranking battery
- Fully padded front deck including lids
- Custom steering wheel
- Dual Pro 4 x 15 battery charger
- Center console storage with fiberglass lid
- Driver's console with extended leg room
- Custom 5" digital gauge with data display
- Lid pistons on storage and rod boxes
- Stainless steel bow and transom eyes
- Turn-signal trim on steering wheel (single)
- Fully insulated built-in ice chest with custom Surf Turf mat
- Four (4) stainless steel drink holders in cockpit
- Plush 24 oz carpet with edge trim
- Remote drain plug
- Trolling motor battery trays
- Chrome fuel fill



CX 20

INNOVATION BECOMES DOMINATION

CONSTRUCTION

- Limited lifetime hull warranty
- Three (3) year limited component warranty
- 100% composite construction—no wood
- Tri-core composite transom
- High performance resin and barrier coat
- Hull hand laid fiberglass construction
- Zero-flex fully foamed stringer system
- Premium gelcoat with UV inhibitors
- Plumbing and electrical systems factory tested

FISHING FEATURES

- Two (2) independent high capacity rear insulated livewells
- Two (2) 800 gph livewell aerator pumps
- Two (2) 800 gph livewell recirculation pumps
- Two (2) 800 gph livewell pump-out pumps
- Livewell timer
- Livewell overflow system
- One (1) bike seat and pro-pole
- One (1) fold-down fishing seat
- Two (2) front deck seat locations
- Three (3) retractable rod buckles—two (2) at bow, one (1) at rod ramp
- Front deck tool and pliers organizer with cup holder
- 6-gauge trolling motor harness
- 10-gauge clean power harness for electronics
- Oversized bow trim switch buttons for easy foot operation
- Deck recess for trolling motor foot pedal
- Built-in fish measuring board with tool holder
- Fully finished fiberglass boxes throughout with custom mats
- LED compartment lights
- LED livewell lights
- Stainless steel bilge and livewell discharge plate
- Passenger side rod ramp
- Passenger footrest with integrated tackle/storage drawer
- Locking oversized storage boxes
- Folding fish net with custom holder
- Center bow rod box with tackle organizing system

SPECIFICATIONS

Length
20' 4"

Beam
96"

Max
Horsepower
250 HP

Dry Weight
(Without
engines)
2,000 LBS

Livewell
Capacity
44 GAL

Fuel
Capacity
50 GAL

Length on
Trailer
(Motor down,
tongue swung in)
23' 9"

Width
on Trailer
102"

Port Rod
Box
Length
8'

Center
Rod Box
Length
8'

Starboard
Rod Box
Length
8'

Front Deck
Length
6' 9"

Front Deck
Width
(Widest)
6' 7"

Our founder, former world champion boat racer Earl Bentz, puts his heart and soul into developing the best high-performance premium tournament bass boats in the business. Through 40 years of innovative manufacturing, Earl has developed the CX 20, rapidly reaching the status of the new standard for premium tournament bass boats and the fastest model in the CX family.

new standard, such as: fully padded front deck, fiberglass finished compartments, Surf-Turf cockpit flooring, redundant digital switching system, molded-in trolling motor wedge, easy access hatches to all of your pumps in the bilge area, and much more.

When you pair the CX 20 with a 250hp outboard, you'll experience a level of performance that makes veteran competitive anglers turn their head. Perfection isn't the goal at Caymas; it's the demand in every boat that leaves the factory. Check out the CX 20 at your closest dealer today!



*Pictured boats may have optional equipment

SAFETY AND QUALITY

- Automatic bilge pump
- Electric bilge pump
- Finished bilge compartment with access doors to pumps and batteries
- Built-in LED bow navigation lights
- Removable LED stern light
- Custom digital switching with tinned wiring
- Horn
- Non-skid aft step mat
- Non-skid bow step mat
- Plexiglass tinted removable windshield—two (2) on dual console
- Recessed retractable boarding ladder
- Stainless steel boarding grab handle
- Retractable passenger grab handle
- Stainless steel passenger grab handle
- Hot Foot throttle
- LED cockpit courtesy light
- SeaStar hydraulic steering
- Tilt steering wheel
- Custom polished aluminum jackplate
- Waterproof stainless steel compartment latches
- Stainless steel bow and stern pull-up cleats

TRAILER FEATURES

- Tandem axle with disc brakes on one axle
- Channel frame with custom fitted bunks
- Custom 14" aluminum wheels and balanced radial tires with matching spare tire
- Vault Hubs with 10 year limited warranty
- Swing tongue
- Dutton-Lainson Winch and jack
- Ratchet trailer tie downs
- Seven pin trailer plug
- Easy-step oversized bow step pad
- Aluminum diamond-plate tread for front and rear step pads
- Caymas lighted step pads
- LED waterproof tail, marker, and reverse lights
- Rock Guard polyurea with clearcoat protective finish
- Custom pin stripe to match boat



COMFORT AND CONVENIENCE

- Custom color selection for entire boat and upholstery
- Custom suspension driver and passenger bucket seats with adjustable slides
- Surf Turf cockpit flooring
- Stainless steel prop
- AGM cranking battery
- Fully padded front deck including lids
- Custom steering wheel
- Dual Pro 4 x 15 battery charger
- Center console storage with fiberglass lid
- Driver's console with extended leg room
- Custom 5" digital gauge with data display
- Lid pistons on storage and rod boxes
- Stainless steel bow and transom eyes
- Turn-signal trim on steering wheel (single)
- Fully insulated built-in ice chest with custom Surf Turf mat
- Four (4) stainless steel drink holders in cockpit
- Plush 24 oz carpet with edge trim
- Remote drain plug
- Trolling motor battery trays
- Chrome fuel fill





INNOVATION BECOMES DOMINATION

CONSTRUCTION

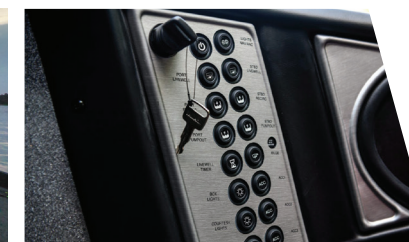
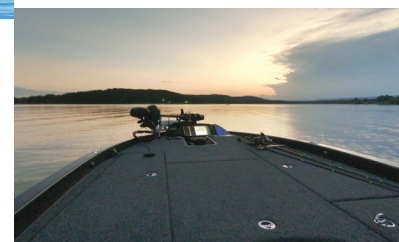
- Limited lifetime hull warranty
- Three (3) year limited component warranty
- 100% composite construction—no wood
- Tri-core composite transom
- High performance resin and barrier coat
- Hull hand laid fiberglass construction
- Zero-flex fully foamed stringer system
- Premium gelcoat with UV inhibitors
- Plumbing and electrical systems factory tested

FISHING FEATURES

- Two (2) independent high capacity rear insulated livewells
- Two (2) 800 gph livewell aerator pumps
- Two (2) 800 gph livewell recirculation pumps
- Two (2) 800 gph livewell pump-out pumps
- Livewell timer
- Livewell overflow system
- One (1) bike seat and pro-pole
- One (1) fold-down fishing seat
- Two (2) front deck seat locations
- Three (3) retractable rod buckles—two (2) at bow, one (1) at rod ramp
- Front deck tool and pliers organizer with cup holder
- 6-gauge trolling motor harness
- 10-gauge clean power harness for electronics
- Oversized bow trim switch buttons for easy foot operation
- Deck recess for trolling motor foot pedal
- Built-in fish measuring board with tool holder
- Fully finished fiberglass boxes throughout with custom mats
- LED compartment lights
- LED livewell lights
- Stainless steel bilge and livewell discharge plate
- Passenger side rod ramp
- Passenger footrest with integrated tackle/storage drawer
- Locking oversized storage boxes
- Folding fish net with custom holder
- Center bow rod box with tackle organizing system

SPECIFICATIONS

Length 21' 4"	Beam 96"	Max Horsepower 300 HP	Dry Weight (Without engines) 2,100 LBS	Livewell Capacity 44 GAL	Fuel Capacity 50 GAL	Length on Trailer (Motor down, tongue swung in) 24' 7"
Width on Trailer 102"	Port Rod Box Length 8' 4"	Center Rod Box Length 8'	Starboard Rod Box Length 7'	Front Deck Length 7' 9"	Front Deck Width (Widest) 6' 7"	



SAFETY AND QUALITY

- Automatic bilge pump
- Electric bilge pump
- Finished bilge compartment with access doors to pumps and batteries
- Built-in LED bow navigation lights
- Removable LED stern light
- Custom digital switching with tinned wiring
- Horn
- Non-skid aft step mat
- Non-skid bow step mat
- Plexiglass tinted removable windshield—two (2) on dual console
- Recessed retractable boarding ladder
- Stainless steel boarding grab handle
- Retractable passenger grab handle
- Stainless steel passenger grab handle
- Hot Foot throttle
- LED cockpit courtesy light
- SeaStar hydraulic steering
- Tilt steering wheel
- Custom polished aluminum jackplate
- Waterproof stainless steel compartment latches
- Stainless steel bow and stern pull-up cleats



COMFORT AND CONVENIENCE

- Custom color selection for entire boat and upholstery
- Custom suspension driver and passenger bucket seats with adjustable slides
- Surf Turf cockpit flooring
- Stainless steel prop
- AGM cranking battery
- Fully padded front deck including lids
- Custom steering wheel
- Dual Pro 4 x 15 battery charger
- Center console storage with fiberglass lid
- Driver's console with extended leg room
- Custom 5" digital gauge with data display
- Lid pistons on storage and rod boxes
- Stainless steel bow and transom eyes
- Turn-signal trim on steering wheel (single)
- Fully insulated built-in ice chest with custom Surf Turf mat
- Four (4) stainless steel drink holders in cockpit
- Plush 24 oz carpet with edge trim
- Remote drain plug
- Trolling motor battery trays
- Chrome fuel fill

TRAILER FEATURES

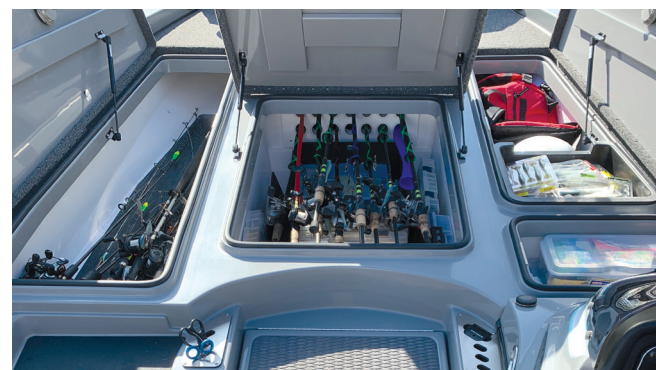
- Tandem axle with disc brakes on both axles
- Channel frame with custom fitted bunks
- Custom 14" aluminum wheels and balanced radial tires with matching spare tire
- Vault Hubs with 10 year limited warranty
- Swing tongue
- Dutton-Lainson Winch and jack
- Ratchet trailer tie downs
- Seven pin trailer plug
- Easy-step oversized bow step pad
- Aluminum diamond-plate tread for front and rear step pads
- Caymas lighted step pads
- LED waterproof tail, marker, and reverse lights
- Rock Guard polyurea with clearcoat protective finish
- Custom pin stripe to match boat

Marine industry icon, Earl Bentz, challenged the dedicated Caymas manufacturing team to develop a tournament-level high performance boat to blow past the competition; and that's exactly what they accomplished.

The CX 21 Pro takes fishing to the next level, giving an enhanced competitive edge to the CX 21 model and effectively combining some of the most sought-after tournament industry features into full packages. This model is quickly becoming known for its superior rough-water handling capabilities, coming tournament loaded with a Lowrance Ghost 47" trolling motor, two 12" Lowrance HDS Live Units, and two 8' Power Pole Blades.

This is in addition to all of the features that are included in the CX 21, which include waterproof fiberglass compartments, 250 HP engine, large fuel payload, room for multiple batteries, and a massive comfort-padded front deck.

As if the CX 21 model wasn't already impressive enough, the CX 21 Pro is here to offer the most enhanced features that you could ask for in a tournament boat, allowing you to always stay one step ahead of your competitors. Check out the CX 21 Pro at your closest dealer today!



*Pictured boats may have optional equipment





SPECIFICATIONS

Length 21' 4"	Beam 96"	Max Horsepower 300 HP	Dry Weight (Without engines) 2,100 LBS	Livewell Capacity 44 GAL	Fuel Capacity 50 GAL	Length on Trailer (Motor down, tongue swung in) 24' 7"
Width on Trailer 102"	Port Rod Box Length 8' 4"	Center Rod Box Length 8'	Starboard Rod Box Length 7'	Front Deck Length 7' 9"	Front Deck Width (Widest) 6' 7"	

The CX line of boats is the most innovative line of bass boats Earl Bentz has ever built; the CX 21 is the flagship model of the CX line of tournament grade high-performance bass boats, surpassing the competition by miles.

Amongst its unbelievable high-performance qualities, the CX 21 can guarantee you rough-water riding comfort, precise handling, ingenious storage systems, and unmatched tournament-winning fishability. The CX 21 hull has a 17" running pad, making this boat slick and easy to drive at impressive speeds, while still maintaining a butter-soft ride that keeps you bone dry.

This boat comes with a 250 HP engine, large fuel payload, room for multiple batteries, massive livewells, Surf Turf cockpit flooring, waterproof fiberglass compartments, storage that will accommodate a warehouse full of tackle and gear, and a massive front deck with anti-fatigue padding that won't wear out your body even on those really long days.

If you're a tournament angler who wants to level up against your competition, you don't need to look any further. Experience the Caymas CX 21 at an authorized Caymas dealer today!



*Pictured boats may have optional equipment

INNOVATION BECOMES DOMINATION



CONSTRUCTION

- Limited lifetime hull warranty
- Three (3) year limited component warranty
- 100% composite construction—no wood
- Tri-core composite transom
- High performance resin and barrier coat
- Hull hand laid fiberglass construction
- Zero-flex fully foamed stringer system
- Premium gelcoat with UV inhibitors
- Plumbing and electrical systems factory tested



FISHING FEATURES

- Two (2) independent high capacity rear insulated livewells
- Two (2) 800 gph livewell aerator pumps
- Two (2) 800 gph livewell recirculation pumps
- Two (2) 800 gph livewell pump-out pumps
- Livewell timer
- Livewell overflow system
- One (1) bike seat and pro-pole
- One (1) fold-down fishing seat
- Two (2) front deck seat locations
- Three (3) retractable rod buckles—two (2) at bow, one (1) at rod ramp
- Front deck tool and pliers organizer with cup holder
- 6-gauge trolling motor harness
- 10 gauge clean power harness for electronics
- Oversized bow trim switch buttons for easy foot operation
- Deck recess for trolling motor foot pedal
- Built-in fish measuring board with tool holder
- Fully finished fiberglass boxes throughout with custom mats
- LED compartment lights
- LED livewell lights
- Stainless steel bilge and livewell discharge plate
- Passenger side rod ramp
- Passenger footrest with integrated tackle/storage drawer
- Locking oversized storage boxes
- Folding fish net with custom holder
- Center bow rod box with tackle organizing system

SAFETY AND QUALITY

- Automatic bilge pump
- Electric bilge pump
- Finished bilge compartment with access doors to pumps and batteries
- Built-in LED bow navigation lights
- Removable LED stern light
- Custom digital switching with tinned wiring
- Horn
- Non-skid aft step mat
- Non-skid bow step mat
- Plexiglass tinted removable windshield—two (2) on dual console
- Recessed retractable boarding ladder
- Stainless steel boarding grab handle
- Retractable passenger grab handle
- Stainless steel passenger grab handle
- Hot Foot throttle
- LED cockpit courtesy light
- SeaStar hydraulic steering
- Tilt steering wheel
- Custom polished aluminum jackplate
- Waterproof stainless steel compartment latches
- Stainless steel bow and stern pull-up cleats



COMFORT AND CONVENIENCE

- Custom color selection for entire boat and upholstery
- Custom suspension driver and passenger bucket seats with adjustable slides
- Surf Turf cockpit flooring
- Stainless steel prop
- AGM cranking battery
- Fully padded front deck including lids
- Custom steering wheel
- Dual Pro 4 x 15 battery charger
- Center console storage with fiberglass lid
- Driver's console with extended leg room
- Custom 5" digital gauge with data display
- Lid pistons on storage and rod boxes
- Stainless steel bow and transom eyes
- Turn-signal trim on steering wheel (single)
- Fully insulated built-in ice chest with custom Surf Turf mat
- Four (4) stainless steel drink holders in cockpit
- Plush 24 oz carpet with edge trim
- Remote drain plug
- Trolling motor battery trays
- Chrome fuel fill

TRAILER FEATURES

- Tandem axle with disc brakes on one axle
- Channel frame with custom fitted bunks
- Custom 14" aluminum wheels and balanced radial tires with matching spare tire
- Vault Hubs with 10 year limited warranty
- Swing tongue
- Dutton-Lainson Winch and jack
- Ratchet trailer tie downs
- Seven pin trailer plug
- Easy-step oversized bow step pad
- Aluminum diamond-plate tread for front and rear step pads
- Caymas lighted step pads
- LED waterproof tail, marker, and reverse lights
- Rock Guard polyurea with clearcoat protective finish
- Custom pin stripe to match boat

CX 19



INNOVATION BECOMES DOMINATION



SPECIFICATIONS

Length 19' 9"	Beam 96"	Max Horsepower 225 HP	Dry Weight (Without engines) 1,900 LBS	Livewell Capacity 38 GAL	Fuel Capacity 50 GAL
Length on Trailer (Motor down, tongue swung in) 22' 10"	Width on Trailer 102"	Port Rod Box Length 8'	Starboard Rod Box Length 8'	Front Deck Length 6' 9"	Front Deck Width (Widest) 6' 6"

The CX 19 is one of a kind in its segment and the largest boat in its class with an overall length of 19' 9" and a 96" beam. The pedigree of the CX line remains true with this model, and what you would expect in an Earl Bentz designed boat.

The overall performance, driveability, and fishability of this boat separates it from the competition. If you're looking for a tournament level bass boat that has more maneuverability, but doesn't give up speed, comfort, storage, or deck space, then look no further than the CX 19.

The CX 19 outpaces the competition and includes Sea Star Tilt Hydraulic Steering, fiberglass storage and rod

boxes, portside rod butt organizer, Surf-Turf cockpit flooring, digital gauge (engine data), molded-in trolling motor wedge, livewell hi-speed pickup (optional), and more features that make it stand out from a crowd.

It's clear that the CX 19 is quickly becoming a fan favorite of the ever-growing list of iconic models Earl Bentz has made throughout his career. At Caymas Boats, we keep innovation at the forefront of everything we do because we are dedicated to providing fishermen the most innovative and well-built product on the market today. Check out the CX 19 at your closest dealer today!



*Pictured boats may have optional equipment

CONSTRUCTION

- Limited lifetime hull warranty
- Three (3) year limited component warranty
- 100% composite construction—no wood
- Tri-core composite transom
- High performance resin and barrier coat
- Hull hand laid fiberglass construction
- Zero-flex fully foamed stringer system
- Premium gelcoat with UV inhibitors
- Plumbing and electrical systems factory tested



SAFETY AND QUALITY

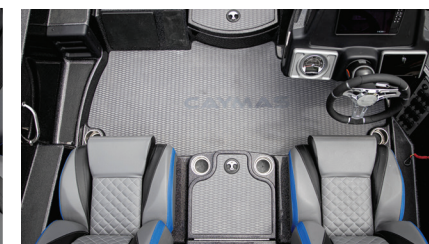
- Electric bilge pump with automatic float switch
- Finished bilge compartment with access doors to pumps and batteries
- Built-in LED bow navigation lights
- Removeable LED stern light
- Circuit breaker protected tinned wiring with custom switches
- Horn
- Non-skid aft step mats
- Non-skid bow step mats
- Plexiglass tinted removeable windshields—two (2) on dual console
- Recessed retractable boarding ladder
- Stainless steel boarding grab handle
- Retractable passenger grab handle
- Stainless steel passenger grab handle
- Hot Foot throttle
- LED cockpit courtesy light
- SeaStar tilt hydraulic steering and steering wheel
- 10" manual jack plate
- Stainless steel bow and stern pull-up cleats

TRAILER FEATURES

- Tandem axle channel frame trailer with disc brakes on one axle
- Custom 14" aluminum wheels and balanced radial tires with matching spare tire
- Vault Hubs with 10 year limited warranty
- Swing tongue
- Winch and jack
- Seven pin trailer plug
- Easy-step oversized bow step pad
- Aluminum diamond-plate tread for front and rear step pads
- Caymas lighted step pads
- LED waterproof tail, marker, and reverse lights
- Rock Guard polyurea finish
- Custom pin stripe to match boat

FISHING FEATURES

- High-capacity rear insulated livewell with divider
- 800 gph livewell aerator pump
- 800 gph livewell recirculation pump
- 800 gph livewell pump-out pump
- Livewell timer
- Livewell overflow system
- One (1) bike seat and pro-pole
- One (1) fold-down fishing seat
- Two (2) front deck seat locations
- Three (3) retractable rod buckles—two (2) at bow, one (1) at rod ramp
- Front deck tool and pliers organizer with cup holder
- 6-gauge trolling motor harness
- 10 gauge clean power harness for electronics
- Bow trim switch for easy operation
- Deck recess for trolling motor foot pedal
- Built-in fish measuring board with tool holder
- Fully finished fiberglass boxes throughout with custom mats
- LED compartment lights
- LED livewell lights
- Stainless steel bilge and livewell discharge plate
- Passenger side rod ramp
- Locking oversized storage boxes
- Center bow storage box with tackle organizing system



COMFORT AND CONVENIENCE

- Custom suspension driver and passenger bucket seats
- Surf Turf cockpit flooring
- Stainless steel prop
- AGM Cranking battery
- Custom steering wheel
- Dual Pro 3 x 15 battery charger
- Center console storage with fiberglass lid
- Driver's console with extended leg room
- Custom 5" digital gauge with data display
- Lid pistons on storage and rod boxes
- Stainless steel bow and transom eyes
- Turn-signal trim on steering wheel (single)
- Fully insulated built-in ice chest with custom Surf Turf mat
- Four (4) stainless steel drink holders in cockpit
- Plush 24 oz carpet with edge trim
- Remote drain plug
- Trolling motor battery trays
- Chrome fuel fill

